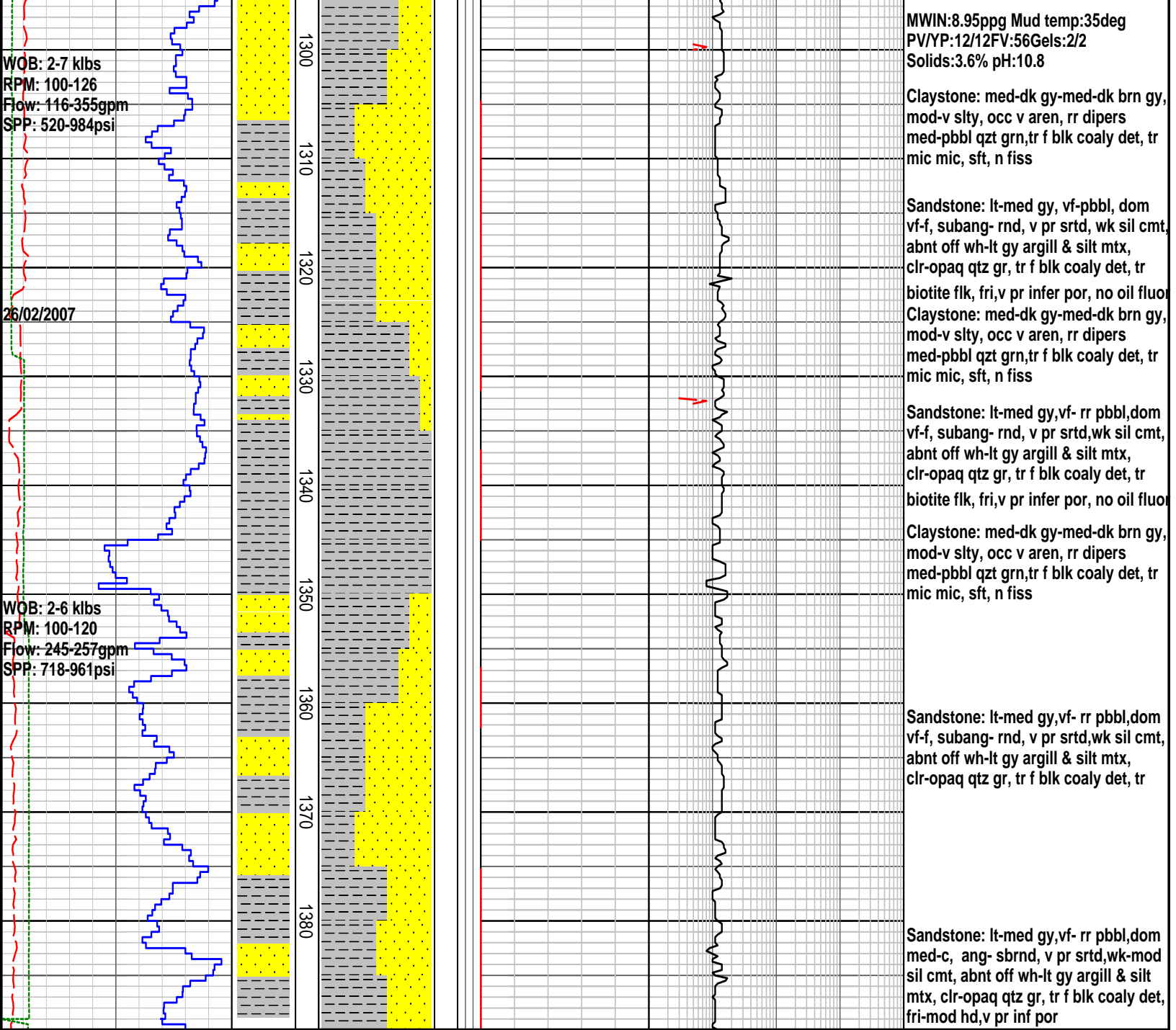




Created : 26/Feb/2007 6:51:31 AM



RATE OF PENETRATION		INTERPRETED LITHOLOGY	MD meters 1:500	LITHOLOGY	CORE	OIL SHOWS	TOTAL GAS	CHROMATOGRAPH				REMARKS	
ROP (0-100m/hr)								1	Methane ppm				10000
Backup ROP (100-200m/hr)							TOTAL GAS 0.1 0.2 0.3 0.4 0.5 %	1	Ethane ppm			10000	
WOB (klb)								1	Propane ppm			10000	
TORQUE AVG								1	iso-Butane ppm			10000	
								1	n-Butane ppm			10000	
								1	iso-Pentane ppm			10000	
									n-Pentane ppm				
									10	100	1000	10000	
WOB: 2-5 klbs RPM: 85-123 Flow: 250-255gpm SPP: 599-680psi			00										Claystone: med gy-med brn gy, tr med brn, mod-v slty, often vf-f aren, tr f blk coaly det, tr pyr, tr micmic, sft, n fiss
			1210										
			1220										Sandstone: ltgy-lt brngy, vf, subang-subrnd, mod srtd, wk sil cmt, abnt off wh-lt gy argill and silt mtx, clr-opaq qtz gr, tr f blk coaly det, tr pyr, fri por vis por, n o fluor
			1230										Survey @ 1233m = 1.75 deg incl
WOB: 4-6 klbs RPM: 103-120 Flow: 250-253gpm SPP: 628-914psi			1240										Claystone: med-dk gy-med-dk brn gy-dk grn gy, mod-v slty, often v f- f aren, tr f blk coaly det, tr pyr, tr mic mic, sft, n fiss Core#2 Cut 1245m-1246m Recovery 0.0m=0%
24/02/2007 25/02/2007 Bit#3RR1: MCP662 6.75" Core PDC TFA 0.5522 Depth in 1245m, out:1246m 1.0m/1.4hrs Grading:0-0-NO-A-X-I-NO-HP			1250										Core#3 Cut 1246m-12470m Recovery 8.13m=34%
Bit#3RR2: MCP662 6.75" Core PDC TFA 0.5522 Depth in 1246m, out:1270m 24m/9.7hrs Grading:0-0-NO-A-X-I-NO-HP			1260										Claystone: med-dk gy-med-dk brn gy-dk grn gy, mod-v slty, often v f- f aren, tr f blk coaly det, tr pyr, tr mic mic, sft, n fiss
2RR2: 6-3/4" M56S PDC Jets: 5 x 12, In: 1246m, Out: 1270m Drilled:m in XX.Xhrs Bit Grade: X-X-XX-X-X-XX-XX			1270										Sandstone: ltgy-lt brngy, vf-f, dom vf,abdn med-vc gr,subang-subrnd, mod srtd, wk sil cmt, abnt off wh-lt gy argill & silt mtx, clr-opaq qtz gr, tr f blk coaly det, tr pyr, fri,pr vis por, no oil fluor
			1280										
			1290										Sandstone: lt-med gy, vf-pbbl, dom vc, subang-subrnd, v pr srtd, wk sil cmt, abnt off wh-lt gy argill & silt mtx, clr-opaq qtz gr, tr f blk coaly det, tr pyt, fri,pr vis por, n oil fluor



FORMATION EVALUATION LOG

RATE OF PENETRATION										INTERPRETED LITHOLOGY	MD meters 1:500	LITHOLOGY	CORE	OIL SHOWS	TOTAL GAS	CHROMATOGRAPH				REMARKS
ROP (0-100m/hr)																1	Methane ppm			
100	90	80	70	60	50	40	30	20	10						1	Ethane ppm			10000	
										Backup ROP (100-200m/hr)					1	Propane ppm			10000	
															1	iso-Butane ppm			10000	
										WOB (klb)					1	n-Butane ppm			10000	
5	10	15	20	25	30	35	40	45	50						1	iso-Pentane ppm			10000	
										TORQUE AVG						n-Pentane ppm				
5	10	15	20	25	30	35	40	45	50							10	100	1000	10000	